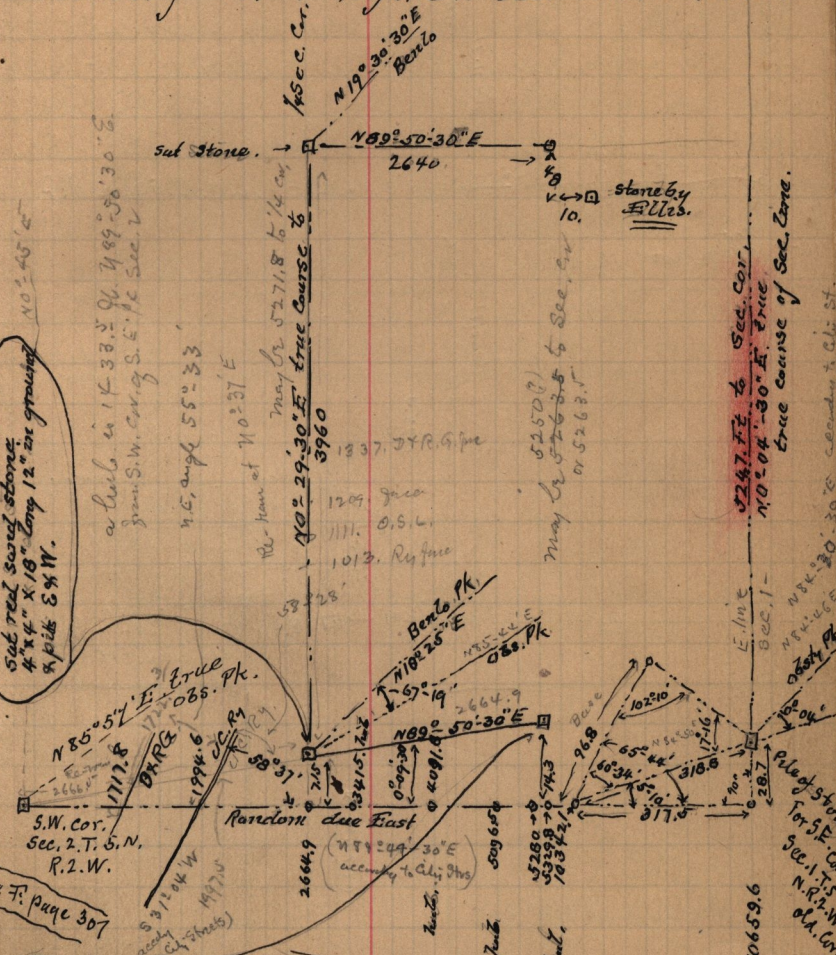


found the corner at N 42 24 E. 113.4 ft. distance
 via the S.E. cor. sec. 2.

From S.E. cor. sec. 2 & ran 119 ft. on random line. at
 726.2 ft. hub. - 2077.3 hub. - 1050 = branch curved N.W. - (2206.3 hub.) on hill.
 2640. (trump hub.)

Survey made June 15-16, for I.R.
 Parsons of S.E. 1/4 and S. 1/2 of N.E. 1/4 Sec. 2. T. 5. N. R. 2. W.



Sub real sand stone 4"x4"x18" long
 12" in girth & mound of earth & pits
 S 75° 34' E true @ 99.2 ft to stake with back end
 & mound with pits. (N 85° 27' 30" E to Obs. Pk.
 N. 16° 13' E Bent's Pk

E. Line Sec. 12, 1065.9.6

E. line
 Sec. 1 -
 N 84° 30' E
 true course of Sec. 2. Cor.
 5247.7 ft. to Sec. Cor.
 N 10° 04' 30" E true
 true course of Sec. 2. Cor.
 N 84° 30' E
 true course of Sec. 2. Cor.
 N 84° 30' E
 true course of Sec. 2. Cor.
 N 84° 30' E
 true course of Sec. 2. Cor.